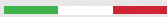


PELHAM-CRESCENT.COM

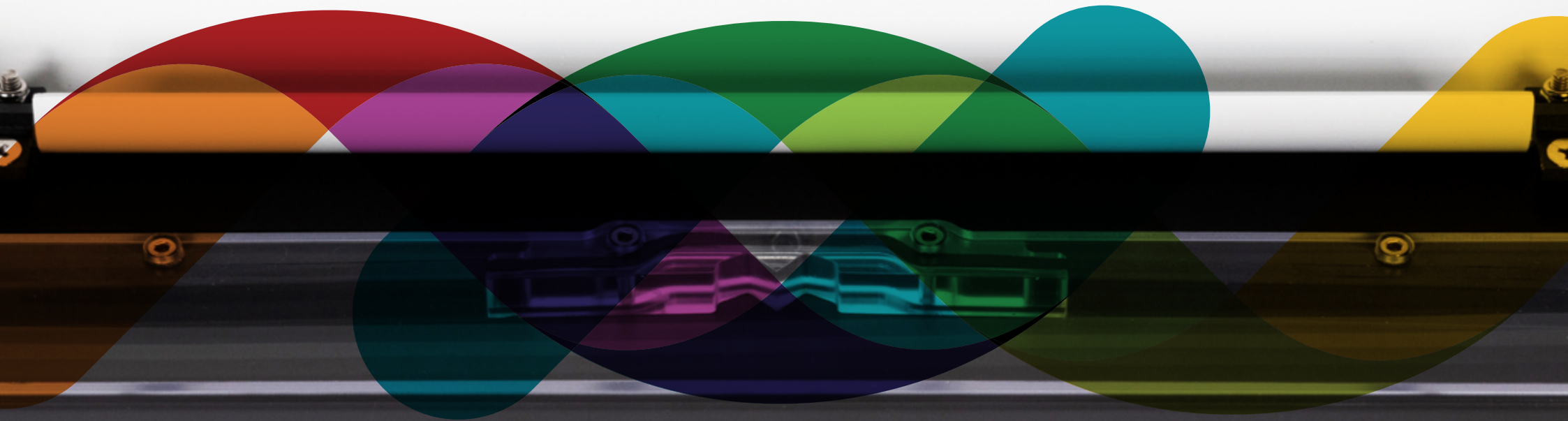


  
MADE IN ITALY

# LUMILIGHT MEANS PHOTOPHERESIS

THE MEDICAL DEVICE FOR EXTRACORPOREAL PHOTOPHERESIS

**PELHAM**



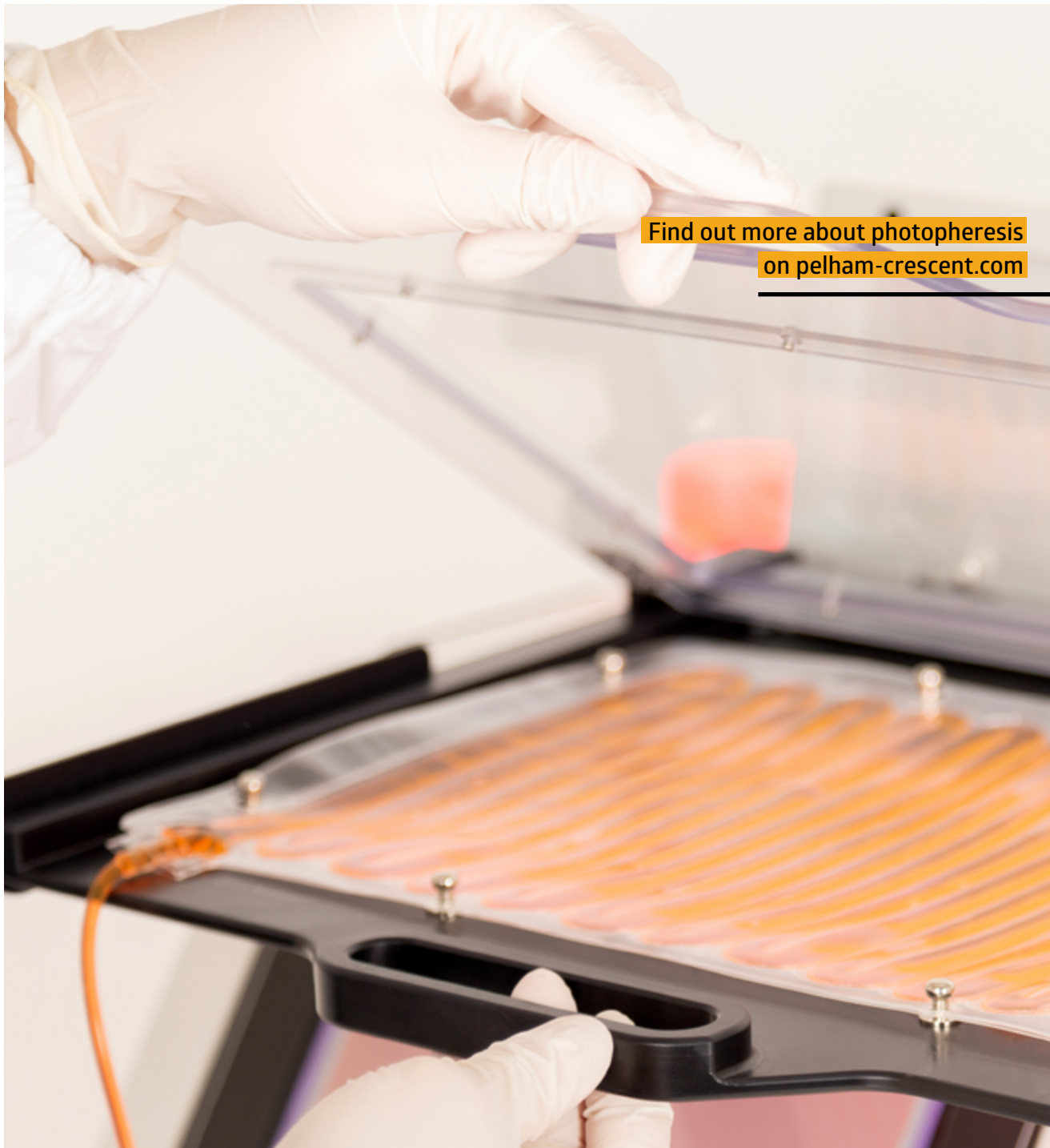


## THE OFFLINE PHOTOPHERESIS MEDICAL DEVICE

We designed Lumilight with care  
and attention to details,  
leaving nothing to chance.

We focused all our resources to create the Lumilight, a device that aims not only to improve the efficacy of Photopheresis, giving a better response to the therapy and consequently enhancing patients' life, but also to give the medical community a new and a simplified approach to a well-consolidated therapy.





Find out more about photophoresis  
on [pelham-crescent.com](http://pelham-crescent.com)

# LUMILIGHT: CERTIFIED, SAFE AND EASY TO USE

It adopts an **advanced technology** to perform safe treatments, in compliance with laws and prescriptions.

Its extensive automation allows for a strict **procedure standardization** and grants **easy usability** and **minimal blood cells manipulation**.

Lumilight is a class IIb medical device for the irradiation step of the Extracorporeal Photophoresis (ECP) treatments intended to trained medical personnel use only.







# LUMILIGHT IS CLINICALLY EFFECTIVE

## APOPTOSIS

LumiLight Photopheresis treatment induces over **95%** apoptosis after 72 hours.



## FULL TRACEABILITY

Thanks to RFID technology and data recording and exportation, **each treatment can be fully interfaced** with the most common management systems.



## FUNCTIONALLY CLOSED SYSTEM

LumiLight disposable kits (LLK-01) have an integrated antibacterial filter and are ready for sterile connections (tube-to-tube welding), features that make the entire system **functionally closed**.



## IRRADIATION

Led-based technology grants **homogeneous 365 nm wavelength UV irradiation**.



## IRRADIATION TIME

Irradiation phase optimized to minimize time length, saving the full efficacy of the treatment.

**Average Treatment Time: 15'**



## PATIENT WEIGHT

The device natively includes two procedures to **safely perform Photopheresis on both low-weight patients and normo-weight patients**.



## SECURITY

**Two hierarchy levels of security.**

This ensures the traceability of the operator on each treatment.



# LUMILIGHT IS AUTOMATED

An integrated algorithm automatically calculates the exact amount of energy and volume of photoactivator, to provide an effective and standardized treatment.

Touchscreen with on screen guided procedure.

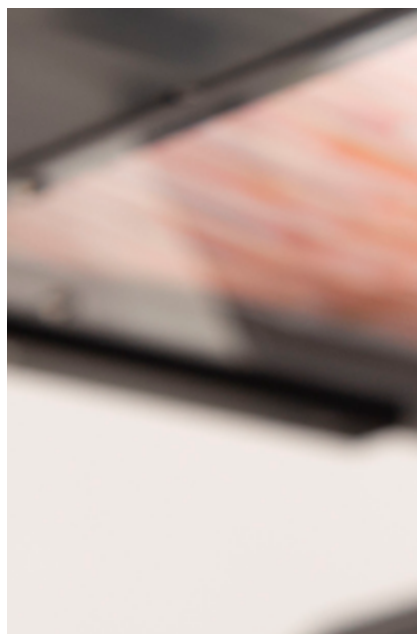
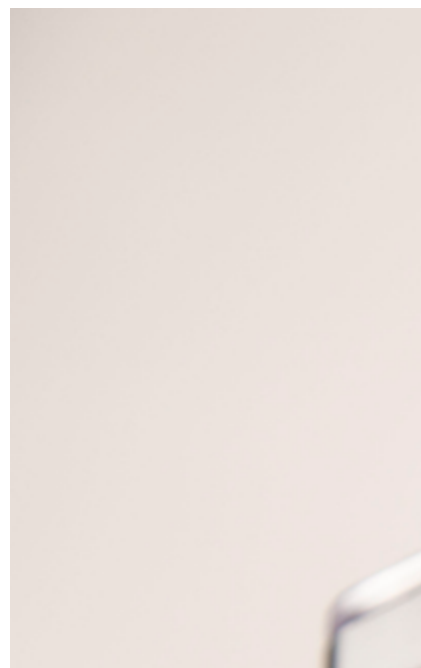
Automatic calculation of irradiation time and 8-MOP amount.

Real-time automatic HCT reading.

Process **standardization**.

Acoustic and visual signals reporting potential issues.

Equipped with **full range of sensors** (HCT, Pressure, Temperature, Leakage, UVA emissions, LED status).





# PHOTOPHERESIS ECP APPLICATIONS

## ACCORDING TO LATEST ASFA GUIDELINES

- > Cutaneous T Cell Lymphoma (CTCL)
- > Graft-Versus-Host Disease (GvHD)
- > Cardiac Transplantation
  - Cellular/Recurrent Rejection
  - Rejection Prophylaxis
- > Lung Transplantation
  - Bronchiolitis Obliterans Syndrome
- > Inflammatory Bowel Disease (IBD)
- > Pemphigus Vulgaris
- > Nephrogenic Systemic Fibrosis  
(also known as Nephrogenic Fibrosing Dermopathy)
- > Psoriasis
- > Scleroderma (Systemic Sclerosis)
- > Atopic (Neuro-) Dermatitis, (Atopic Eczema), Recalcitrant

## ACCORDING TO PUBLISHED STUDIES

- > Liver Transplantation
  - Acute Rejection
  - Rejection Prophylaxis
  - Calcineurin Inhibitors Delay



**Transportable** bench-top system.

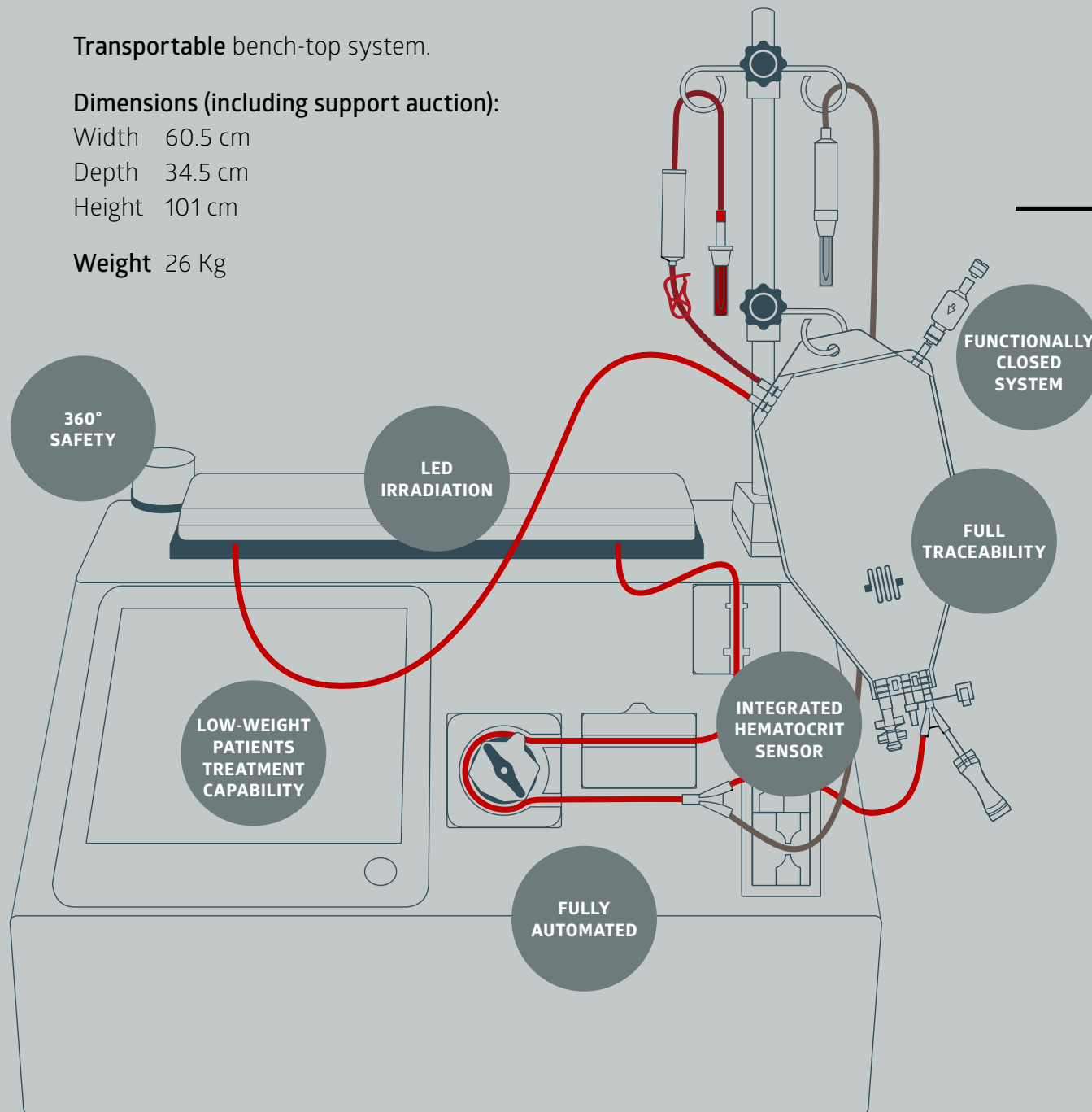
**Dimensions (including support auction):**

Width 60.5 cm

Depth 34.5 cm

Height 101 cm

**Weight** 26 Kg



# LUMI LIGHT

## FEATURES

We designed Lumilight with care and attention to details, leaving nothing to chance.

Find out more about Pelham and photopheresis on [pelham-crescent.com](http://pelham-crescent.com).



Lumilight is **CE** 1282  
certified in accordance  
with European Directives.

### PELHAM: ITALIAN QUALITY

Lumilight and its dedicated kit have the privilege to be fully manufactured and certified in Italy.

Fully developed and produced in Italy, with **high quality materials** up to the smallest detail.

# PELHAM

Pelham is at your disposal to provide more information,  
to answer any question you may have  
and to create an effective solution for your needs.

**Pelham Crescent S.r.l.**  
via Strozzacapponi, 92-U18  
06132 Perugia, Italy

**email** [info@pelhamc.com](mailto:info@pelhamc.com)  
**phone** +39.075.798.26.06  
**www** [www.pelham-crescent.com](http://www.pelham-crescent.com)

Pelham is a certified Company:

**UNI CEI EN ISO 13485:2016**

**UNI CEI EN ISO 9001:2015**



**MADE IN ITALY**